



A Professional Manufacturer of Display

Manufacturer Certificated



CERT. No.: 282Q19070712006



CERT. No.: 282E19070712007

Product Specification

Model: TTH020BHS-01

2.0" TFT Display Module (480*360)

This module uses RoHS material

Tailor Pixels Technology Co., Ltd.

www.tailorpixels.com

tailor@tailorpixels.com

Ph: 86-755-8821 2653

Contents

1. Record of Revision	2
2. General Specifications	3
3. Mechanical Drawing	4
4. Interface	5
5. Absolute Maximum Ratings	6
6. Electrical Characteristics	6
7. Optical Characteristics	7
8. Environmental / Reliability Tests	9
9. Precautions For Use of LCD modules	10

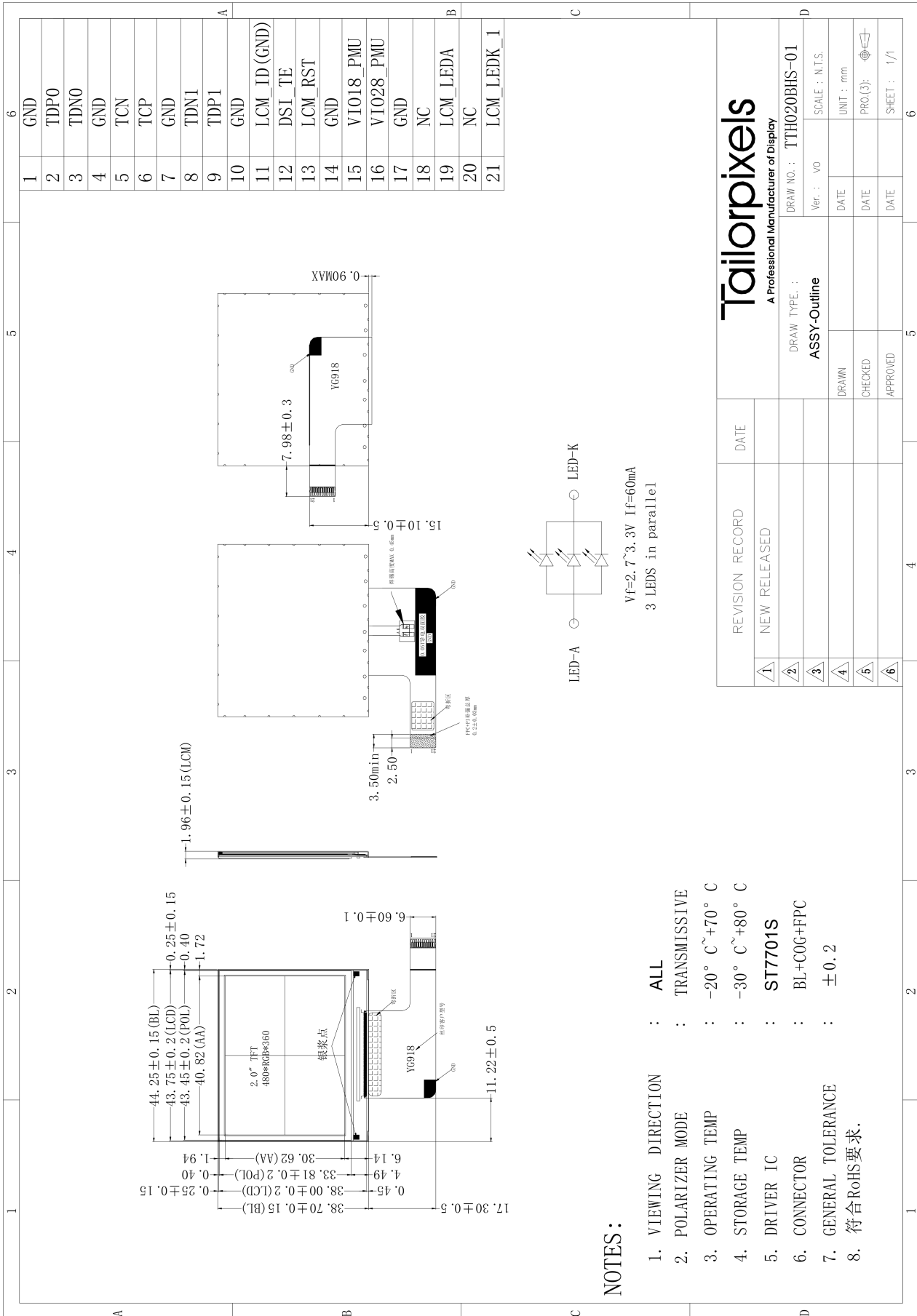
1 Record of Revision

Version	Revise Date	Content	Remark

2 General Specifications

ITEM	Standard value	UNIT
LCD Type	TFT Transmissive	/
Driver Element	TFT Active matrix	
Number of Dots	480* (RGB)*360	Dots
Pixel Arrangement	RGB Stripe	
Dot Pitch (W*H)	0.08505*0.08505	mm
Active Area	40.82(H)×30.62(V)	mm
Viewing Direction	ALL	O'CLOCK
Control IC	ST7701S	
Module Size(W*H*T)	44.25(W)×38.70 (H)×1.96(T)	mm
Approx. Weight	TBD	g
Back Light	3 White LED	

3 Mechanical Drawing



4 Interface

NO.	SYMBOL	Description
1	GND	Ground
2	D0P	Positive MIPI differential data inputs
3	D0N	Negative MIPI differential data inputs
4	GND	Ground
5	CLKN	Negative MIPI differential clock inputs
6	CLKP	Positive MIPI differential clock inputs
7	GND	Ground
8	D1N	Negative MIPI differential data inputs
9	D1P	Positive MIPI differential data inputs
10	GND	Ground
11	LCM_ID	ID PIN,connect GND
12	TE	Tearing effect signal pin,no use please NC
13	RESET	Reset pin
14	GND	Ground
15	IOVCC(1.8V)	Power voltage for IO
16	VCI(2.8V)	Power voltage
17	GND	Ground
18	NC	NC
19	LEDA	LED power anode
20	NC	NC
21	LEDK	LED power cathode

5 Absolute Maximum Ratings

Parameter	Symbol	Min	Max	Unit
Supply voltage	V _{CI}	-0.3	4.6	V
Supply voltage (I/O)	IOVCC	-0.3	4.6	V
Supply current (one LED)	I _{LED}		20	mA
Operating temperature	T _{OP}	-20	+70	°C
Storage temperature	T _{ST}	-30	+80	°C

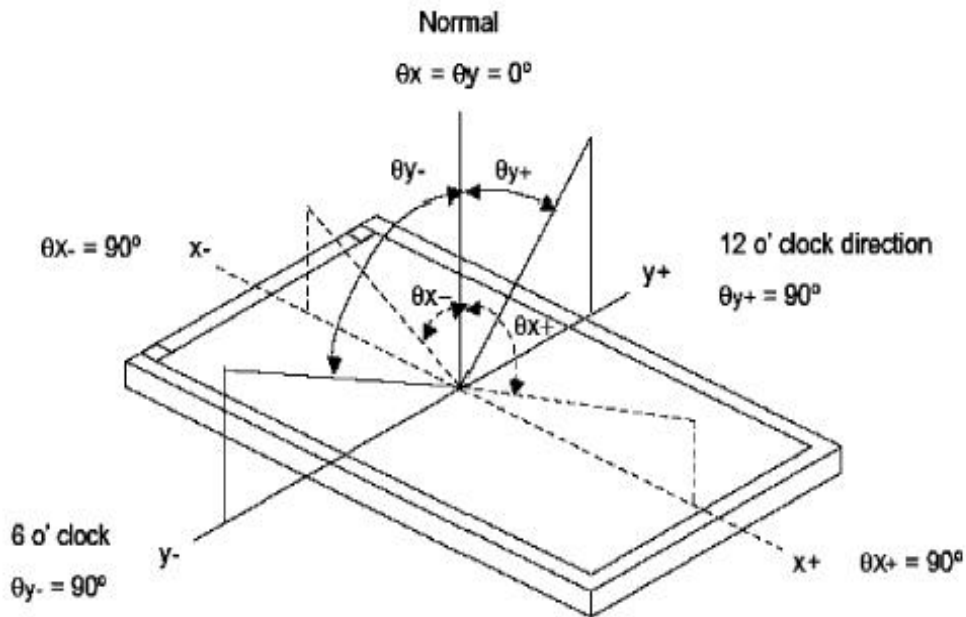
6 Electrical Characteristics

Item	Symbol	Min	Typ	Max	Unit
Supply voltage (I/O)	IOVCC	1.65	1.8	3.3	V
Supply voltage	V _{CI}	2.5	2.8	3.3	V
Input voltage	V _{IL}	V _{SS}	-	0.3 IOVCC	V
	V _{IH}	0.7 IOVCC	-	IOVCC	V
LED Forward voltage	V _f	2.7	3.0	3, 3	V
Input backlight current	I _{LED}	-	60		mA

7 Optical Characteristics

ITEM	SYMBOL	CONDITIONS	SPECIFICATIONS			UNIT	NOTE
			MIN.	TYP.	MAX		
Brightness	B	Viewing normal angle	300	350	-	Cd/m ²	All left side data are based on SHENG JING's product reference only
Contrast Ratio	CR		800	1000	--	--	
Response Time	Tr+Tf		--	35	45	ms	
CIE Color coordinate	Red		XR	Typ -0.05	0.635	Typ +0.05	
		YR	0.336				
	Green	XG	0.298				
		YG	0.576				
	Blue	XB	0.134				
		YB	0.125				
	White	XW	0.297				
		YW	0.325				
Viewing Angle	Hor.	θ_{X+}	--	80	--	Deg.	
		θ_{X-}	--	80	--		
	Ver.	θ_{Y+}	--	80	--		
		θ_{Y-}	--	80	--		
Uniformity	Un		70	80	--	%	

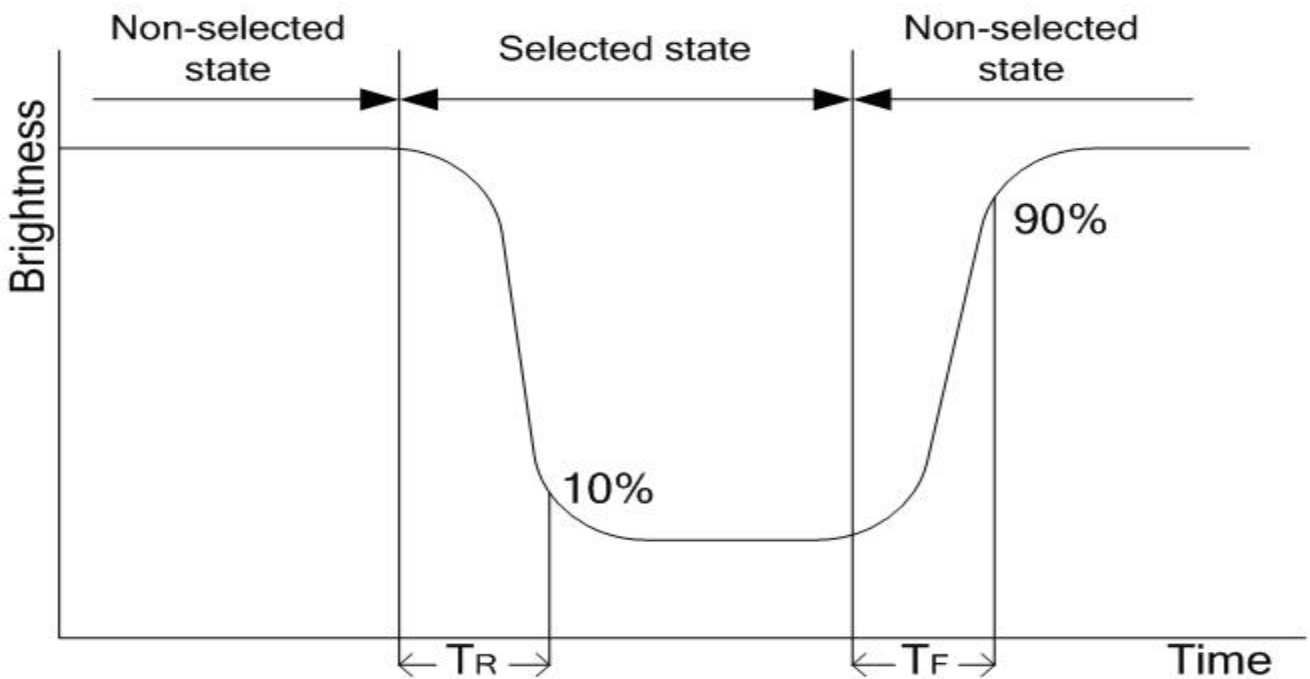
Note 1 : Definition of Viewing Angle θ_x and θ_y :



Note 2: Definition of contrast ratio CR:

$$CR = \frac{\text{Brightness of non-selected dots (white)}}{\text{Brightness of selected dots (black)}}$$

Note 3: Definition of response time (TR, TF)



8 Environmental / Reliability Tests

No	Test Item	Condition	Remarks
1	High Temperature Operation	T _s = +70°C, 240hrs	Note 1 IEC60068-2-2, GB2423. 2-89
2	Low Temperature Operation	T _a = -20°C, 240hrs	Note 2 IEC60068-2-1 GB2423.1-89
3	High Temperature Storage	T _a = +80°C, 240hrs	IEC60068-2-2 GB2423. 2-89
4	Low Temperature Storage	T _a = -30°C, 240hrs	IEC60068-2-1 GB/T2423.1-89
5	High Temperature & Humidity Storage	T _a = +60°C, 90% RH max, 160 hours	IEC60068-2-3 GB/T2423.3-2006
6	Thermal Shock (Non-operation)	-30°C 30 min ~ +80°C 30 min Change time: 5min, 30 Cycle	Start with cold temperature, end with high temperature IEC60068-2-14, GB2423.22-87
7	Electro Static Discharge (Operation)	C=150pF, R=330 Ω, 5 points/panel Air:±6KV, 5 times; Contact: ±2KV, 5 times; (Environment: 15°C ~ 35°C, 30% ~ 60%, 86Kpa ~ 106Kpa)	IEC61000-4-2 GB/T17626.2-1998
8	Vibration (Non-operation)	Frequency range: 10~55Hz, Stroke: 1.mm Sweep: 10Hz~55Hz~10Hz 2 hours for each direction of X .Y. Z. (package condition)	IEC60068-2-6 GB/T2423.5-1995
9	Shock (Non-operation)	60G 6ms, ± X, ±Y , ± Z 3 times for each direction	IEC60068-2-27 GB/T2423.5-1995
10	Package Drop Test	Height: 60 cm, 1 corner, 3 edges, 6 surfaces	IEC60068-2-32 GB/T2423.8-1995

Note: 1. T_s is the temperature of panel's surface.
2. T_a is the ambient temperature of sample.

9 Precautions For Use of LCD modules

9.1 Handling Precautions

- 9.1.1 The display panel is made of glass. Do not subject it to a mechanical shock by dropping it from a high place, etc.
- 9.1.2 If the display panel is damaged and the liquid crystal substance inside it leaks out, be sure not to get any in your mouth, if the substance comes into contact with your skin or clothes, promptly wash it off using soap and water.
- 9.1.3 Do not apply excessive force to the display surface or the adjoining areas since this may cause the color tone to vary.
- 9.1.4 The polarizer covering the display surface of the LCD module is soft and easily scratched. Handle this polarizer carefully.
- 9.1.5 If the display surface is contaminated, breathe on the surface and gently wipe it with a soft dry cloth. If still not completely clear, moisten the cloth with one of the following solvents:
 - Isopropyl alcohol
 - Ethyl alcoholSolvents other than those mentioned above may damage the polarizer. Especially, do not use the following: Water; Ketene; Aromatic solvents
- 9.1.6 Do not attempt to disassemble the LCD Module.
- 9.1.7 If the logic circuit power is off, do not apply the input signals.
- 9.1.8 To prevent the destruction of the elements by static electricity, be careful to maintain an optimum work environment.
 - 9.1.8.1 Be sure to ground the body when handling the LCD Modules.
 - 9.1.8.2 Tools required for assembly, such as soldering irons, must be properly ground.
 - 9.1.8.3 To reduce the amount of static electricity generated, do not conduct assembly and other work under dry conditions.
 - 9.1.8.4 The LCD Module is coated with a film to protect the display surface. Be careful when peeling off this protective film since static electricity may be generated.

9.2 Storage Precautions

- 9.2.1 When storing the LCD modules, avoid exposure to direct sunlight or to the light of fluorescent lamps.
- 9.2.2 The LCD modules should be stored under the storage temperature range. If the LCD modules will be stored for a long time, the recommended condition is:
Temperature: 0°C ~ 40°C, Relatively humidity: ≤80%
- 9.2.3 The LCD modules should be stored in the room without acid, alkali, and harmful gas.

9.3 Transportation Precautions

The LCD modules should be no falling and violent shocking during transportation, and also should avoid excessive press, water, dampness, and sunshine.