

Manufacturer Certificated



CERT. No.: 282Q19070712006

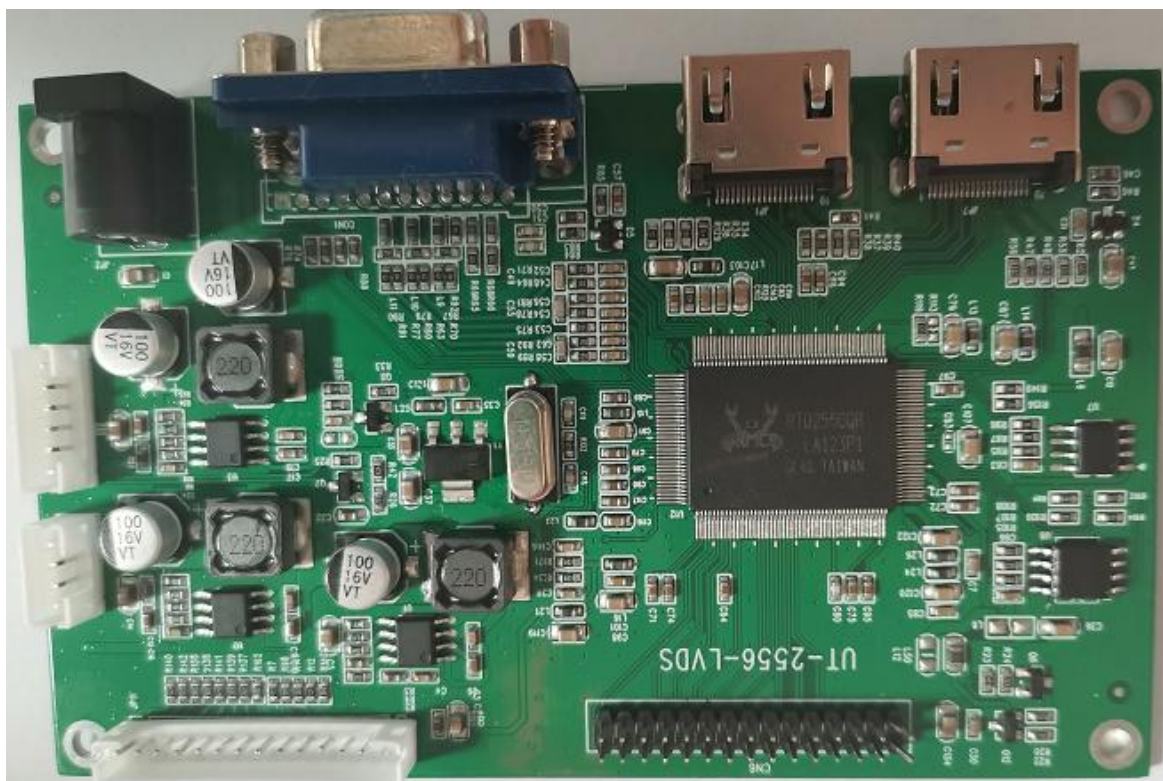
CERT. No.: 282E19070712007

## Product Specification

Model: TBJ101HD-01

### HDMI/VGA Display Board

This module uses ROHS material



Tailor Pixels Technology Co., Ltd.

[www.tailorpixels.com](http://www.tailorpixels.com)

[tailor@tailorpixels.com](mailto:tailor@tailorpixels.com)

Ph: 86-755-8821 2653

# Contents

1. Record of Revision .....	2
2. General Specifications .....	3
3. Electrical Characteristics .....	3
4. PIN-MAP .....	4
5. Block Diagram .....	6
6. Mechanical Drawing .....	7

## 1. Record of Revision

Version	Revise Date	Content	Remark
V1.0	2020/07/08	-	-

## 2. General Specifications

Feature		Spec
Characteristics	Size	-
	LCM Resolution supported(Max)	-
	Pixel Configuration	R.G.B.-Stripe
	Interface	HDMI/VGA
	Connect type	Cable
	Key	5key
Mechanical	PCB (W x H )	110.0*68.0mm
	LCM connector	ST-TJC8-2.54mm
	HDMI connector	HDMI-019S
	VGA connector	VGA15 (Female )

## 3. Electrical Characteristics

Item	Symbol	MIN	Typ	MAX	Unit
Supply Voltage	<b>VDD</b>	7	12	15	V
Direct Current	I <sub>dd</sub>	630	350	290	mA
Operating Temperature	TOPR	-10	-	60	°C
Storage Temperature	TSTG	-20	-	70	°C

## 4. PIN-MAP

### 4.1 HDMI PIN-MAP

Pin	Signal	Description
1	TMDS Data 2+	TMDS Transition differential signal 2+
2	TMDS Data2 Sh	Data2 Shielding ground
3	TMDS Data 2-	TMDS Transition differential signal 2-
4	TMDS Data 1+	TMDS Transition differential signal 1+
5	TMDS Data1 Sh	Data1 Shielding ground
6	TMDS Data 1-	TMDS Transition differential signal 1-
7	TMDS Data 0+	TMDS Transition differential signal 0+
8	TMDS Data 0 S	Data0 Shielding ground
9	TMDS Data 0-	TMDS Transition differential signal 0-
10	TMDS Clock+	TMDS Transition differential signal Clock+
11	TMDS Clock Sh	Clock Shielding ground
12	TMDS Clock-	TMDS Transition differential signal Clock-
13	CEC	Electronic protocol CEC
14	NC	NC
15	SCL	I2C Clock Line
16	SDA	I2C DATA Line
17	DDC/CEC GND	Data display channel
18	+5V	+5V Power
19	Hot Plug Detec	Hot Plug Detec

### 4.2 JP11 (Key board) 14PIN/2.0mm

Pin No.	Symbol	Function
1	VCC	Power supply 3.3V
2	IR	Remote control (option, normally without)
3	GND	GND
4	KO	ON/OFF
5	LED R	Red LED
6	LED G	Green LED
7	GND	GND
8	K1	Signal channel switch menu
9	K2	Reduce key
10	K3	Increase key
11	K4	Menu key
M	K5	NC
13	K6	NC
14	K7	NC

### 4.3 JP5 ( Backlight option 6PIN/2.0mm)

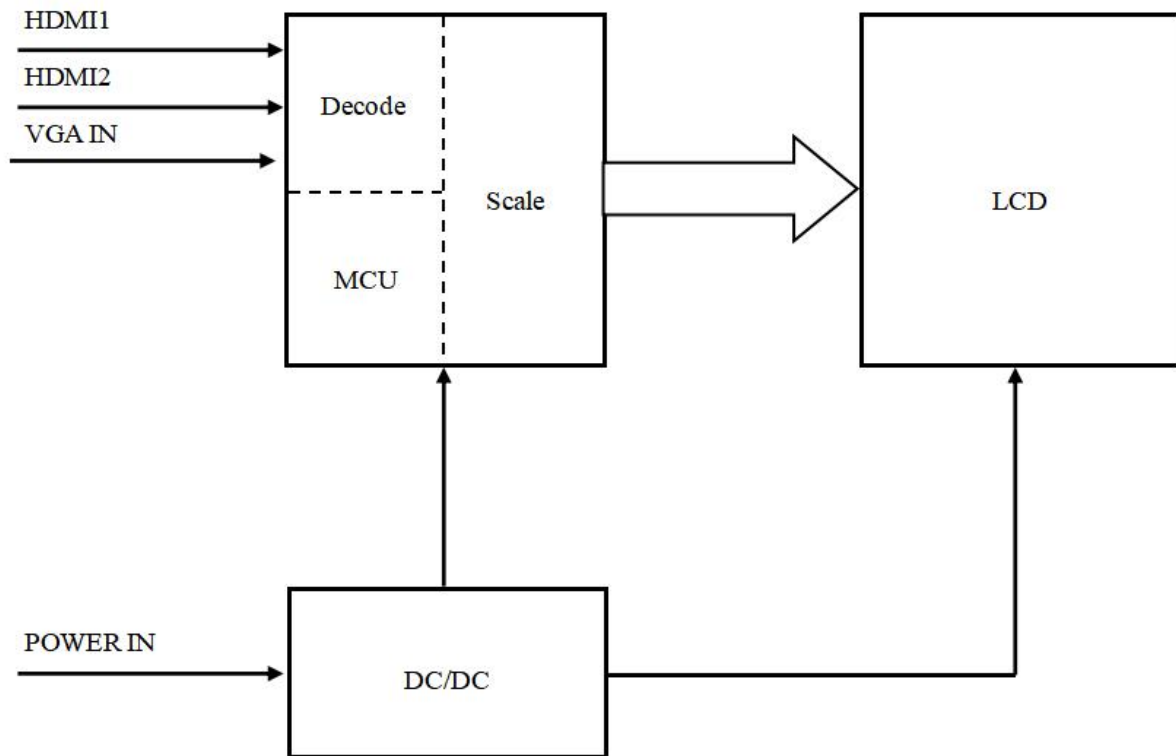
Pin No.	Symbol	Function
1	GND	GND
2	GND	GND
3	ADJ	Backlight PWM signal
4	EN	Backlight enable signal
5	12V	Power supply
6	12V	Power supply

### 4.4 CON6

1-3	VCC	Power Supply 3.3V/5V
4-6	GND	Power Ground
7	RX00-	LVDS signal
8	RX00+	LVDS signal
9	RX01-	LVDS signal
10	RX01+	LVDS signal
11	RX02-	LVDS signal
12	RX02+	LVDS signal
13-14	GND	Power Ground
15	RX0COLK-	LVDS clock signal
16	RX0COLK+	LVDS clock signal
17	RX03-	LVDS signal
18	RX03+	LVDS signal
19	RX00-	LVDS signal
20	RX00+	LVDS signal
21	RX01-	LVDS signal
22	RX01+	LVDS signal
23	RX02-	LVDS signal
24	RX02+	LVDS signal
25-26	GND	Power Ground
27	RX0COLK-	LVDS clock signal
28	RX0COLK-	LVDS clock signal
29	RX03-	LVDS signal
30	RX03+	LVDS signal

## 5. Block Diagram

6.



## 6. Mechanical Drawing

