



A Professional Manufacturer of Display

Manufacturer Certificated



CERT. No.: 282Q19070712006

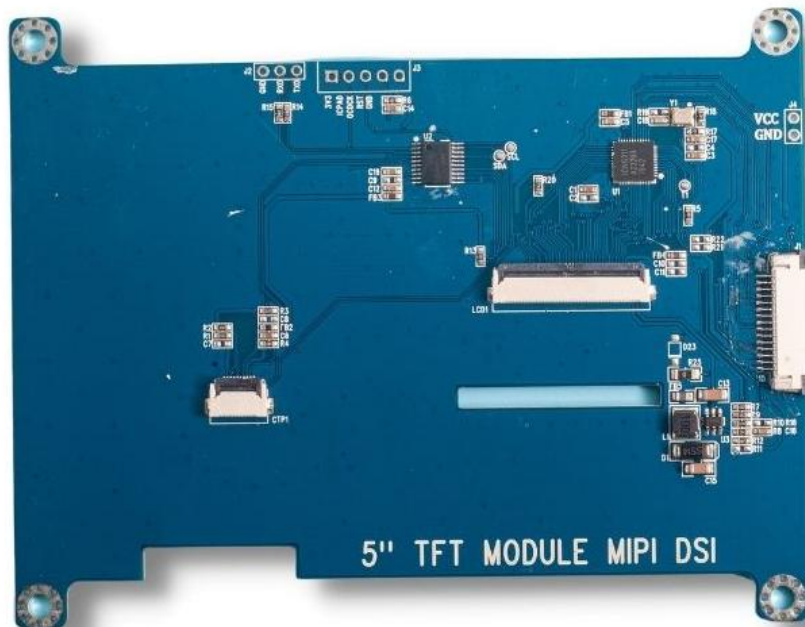
CERT. No.: 282E19070712007

Product Specification

Model: TBK050MI-01

5.0"(MIPI) Display Board

This module uses RoHS material



Tailor Pixels Technology Co., Ltd.

www.tailorpixels.com

tailor@tailorpixels.com

Ph: 86-755-8821 2653

Contents in this document are subject to change without notice. No part of this document can be reproduced or transmitted by any means for any purpose without the written permission of Tailor Pixels Technology Co., Ltd.

Contents

1. Record of Revision	2
2. General Specifications	3
3. Electrical Characteristics	3
4. PIN-MAP	4
5. Block Diagram	6
6. Mechanical Drawing	7

2. General Specifications

	Feature	Spec
Characteristics	Size	5.0 inch
	LCM Resolution supported	800(horizontal)*480(Vertical)
	Interface	DSI MIPI
	Connect type	Connector
	Display Colors	16.2M
	PCBA size	120.70*93.04*1.6mm
	LCM connector	40PIN-0.5S
	CTP connector	10PIN-0.5S
	MIPI connector	15PIN-1.0S

3. Electrical Characteristics

Item	Symbol	MIN	Typ	MAX	Unit
Supply Voltage	VDD	-0.5	-	3.96	V
Direct Current	Id	90	110	130	mA
Backlight Current	If	-	40	-	mA
Operating Temperature	TOPR	-20	-	70	°C
Storage Temperature	TSTG	-30	-	80	°C

4. PIN-MAP

4.1 PIN-MAP-MIPI

No.	Symbol	Description
1	GND	Ground
2	MP_DP1	MIPI Positive data1 signal(+)
3	MP_NP1	MIPI Negative data1 signal(-)
4	GND	Ground
5	MP_DCN	MIPI Positive clock signal(+)
6	MP_DCP	MIPI Positive clock signal(-)
7	GND	Ground
8	MP_DN0	MIPI Positive data0 signal(+)
9	MP_DP0	MIPI Negative data0 signal(-)
10	GND	Ground
11	SCL0	I2C0 clock signal
12	SDA0	I2C0 data signal
13	GND	Ground
14	DC	3V3
15	DC	3V3

4.2 PIN-MAP-Backlight power supply(reserved,default no use)

No.	Symbol	Description
1	VCC5V	Power supply for backlight
2	GND	System Ground

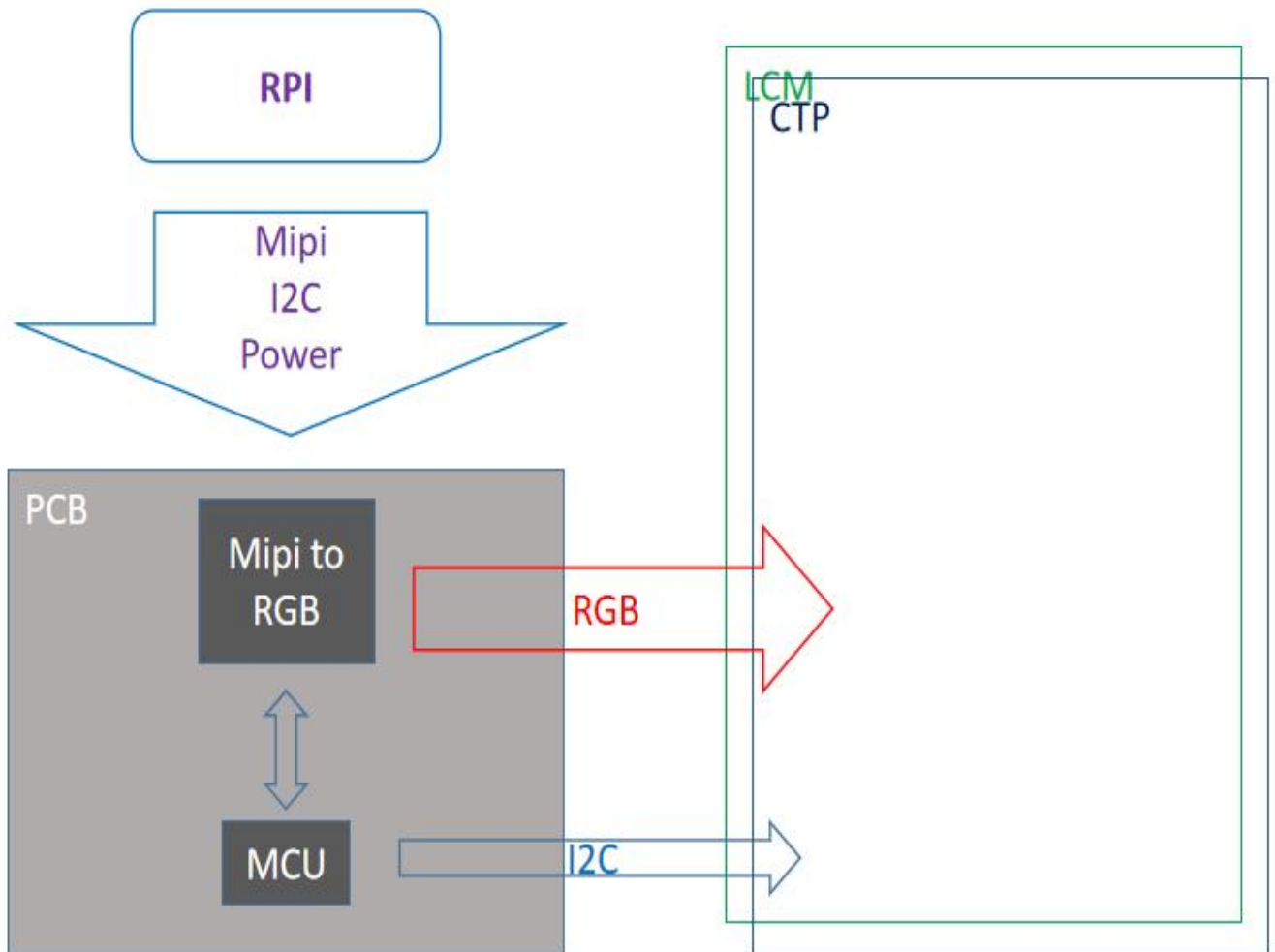
4.3 PIN-MAP-LCM

No.	Symbol	Description
1	VLED-	Backlight LED Cathode
2	VLED+	Backlight LED Anode.
3	GND	Ground
4	VDD	Power supply
5~12	R0~R7	Data bus
13~20	G0~G7	Data bus
21~28	B0~B7	Data bus
29	GND	Ground
30	DCLK	Dot clock signal input. Latching input data at its rising edge.
31	DISP	Normally pulled high. DISP="1": Normally operation (Default) DISP="0": Timing controller, source driver will turn off ,all output are High-Z.
32	HSYNC	Horizontal sync input. Negative polarity.
33	VSYNC	Vertical sync input. Negative polarity.
34	DE	Data enable input. Active high to enable the input data bus under "DE Mode."
35	NC	No connect
36	GND	System Ground
37	XR(NC)	No connect
38	YD(NC)	No connect
39	XL(NC)	No connect
40	YU(NC)	No connect

4.4 PIN-MAP-CTP

No.	Symbol	Description
1	GND	System Ground
2	VDD	Power supply
3	SCL	I2C Clock input
4	NC	No connect
5	SDA	I2C Data input and output
6	NC	No connect
7	RST	Reset pin for CTP
8	VDD	Power supply
9	INT	Interrupt request to the host
10	GND	System Ground

5. Block Diagram



6. Mechanical Drawing

